

RIGA #20787

floormount tub filler with handshower



FEATURES

Solid brass
Single-control lever with pressure balance cartridge
Cartridge #ALT76069900
1/2" connections
5' double interlock flexible hose, anti-torsion
Single spray handshower with reduced water-efficient flow: 2.0 gpm (7.6 L/m)
Spout water flow: 5gpm (18.9 L/min)
Featuring "Easy fit" system

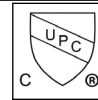
FINISH

Polished chrome (pc)

WARRANTY

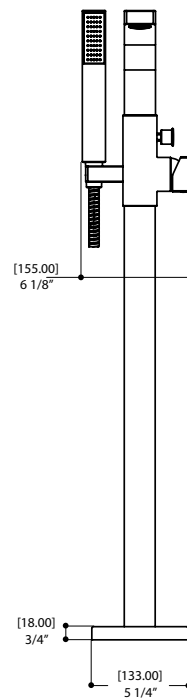
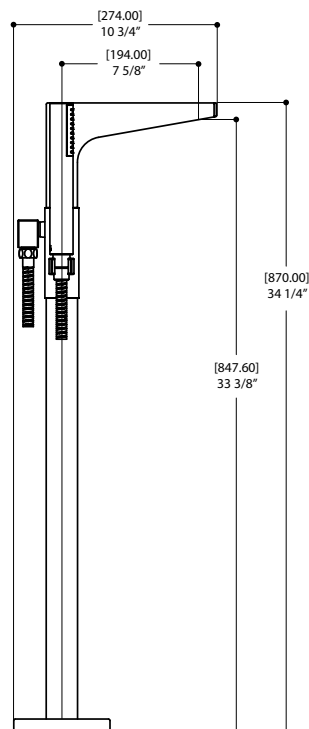
Limited lifetime warranty on all cartridges and also on the polished chrome finish. All other components and parts carry a limited five-year warranty.

CODE & COMPLIANCE



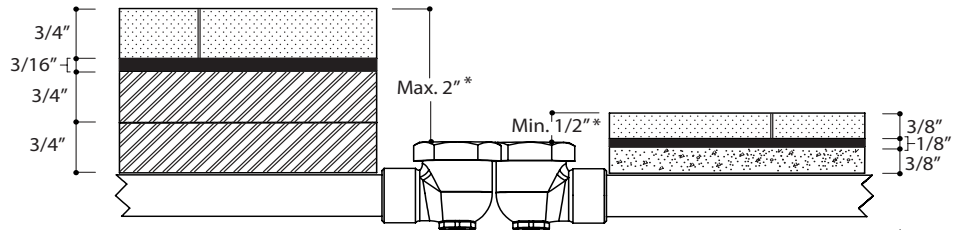
SPECS AT LARGE

Total faucet projection: 10 3/4" **Flow rate spout:** 5gpm (18.9 L/min)
CC spout projection: 7 5/8" **Flow rate handshower:** 2 gpm (7.6 L/m)
Total height faucet: 34 1/4"



last revision : 08/12/2016

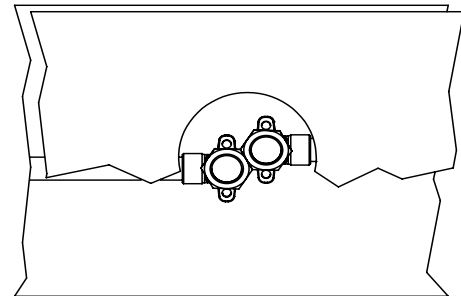
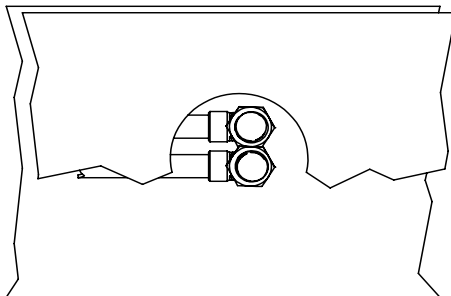
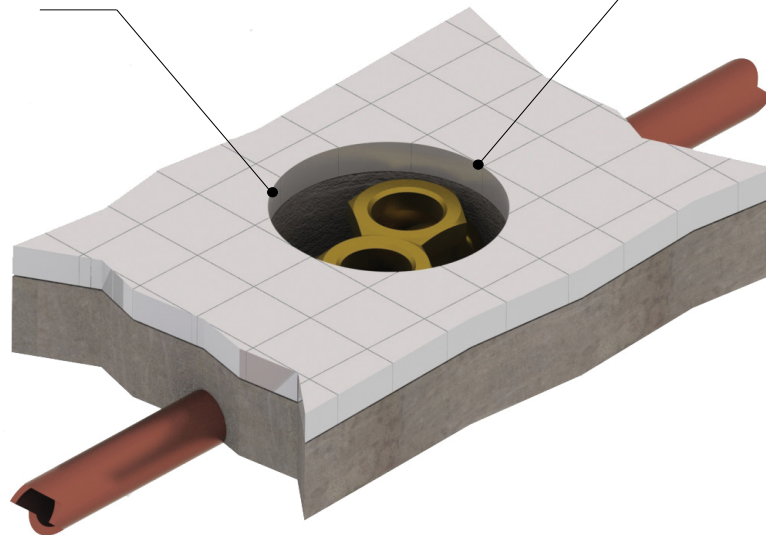
Featuring "Easy fit", a job-site friendly installation system



* If set deeper, use standard commercially available male-female extension ♂—♀
 * si c'est plus profond, utiliser une extension mâle-femelle standard

Ouverture recommandée de
 ø 2 1/2"

Recommended opening
 limited to within ø 2 1/2"



Optimize your rough configuration for a minimum C-C between hot & cold inlets (see examples)
 Optimisez la configuration du brut pour minimiser le C-C entre l'entrée de l'eau chaude et froide